



**NEET PG 2025**

**Surgery Previous Year  
Questions with  
Solutions**

**TUTORIALS**

[Click Here to Explore More Surgery PYQs](#)

## Surgery

### Question 1

#### Clinical question

A 65-year-old male with a stab injury to the abdomen presents to the casualty. Examination reveals abdominal tenderness and guarding. Which of the following is the next best step in management?

#### Options:

- A) Peritoneal wash
- B) Emergency laparotomy
- C) Ultrasound of the abdomen
- D) CT abdomen

**Correct answer: Emergency laparotomy**

### Question 2

#### Clinical question

A 25-year-old with a 5-year history of unilateral varicose veins on the left leg presents to the surgery OPD as shown below. Identify the correct statement regarding this condition.



#### Options:

[Click Here to Explore More Surgery PYQs](#)

- A) The most common cause is pelvic tumours
- B) Graded as C6
- C) Recommended treatment is sclerotherapy in all cases
- D) It can lead to eczema and pigmentation

**Correct answer: D) It can lead to eczema and pigmentation**

### Question 3

#### Clinical question

Identify the stage of breast cancer depicted in the image below.



#### Options:

- A) T4b
- B) T4d
- C) T4c
- D) T3

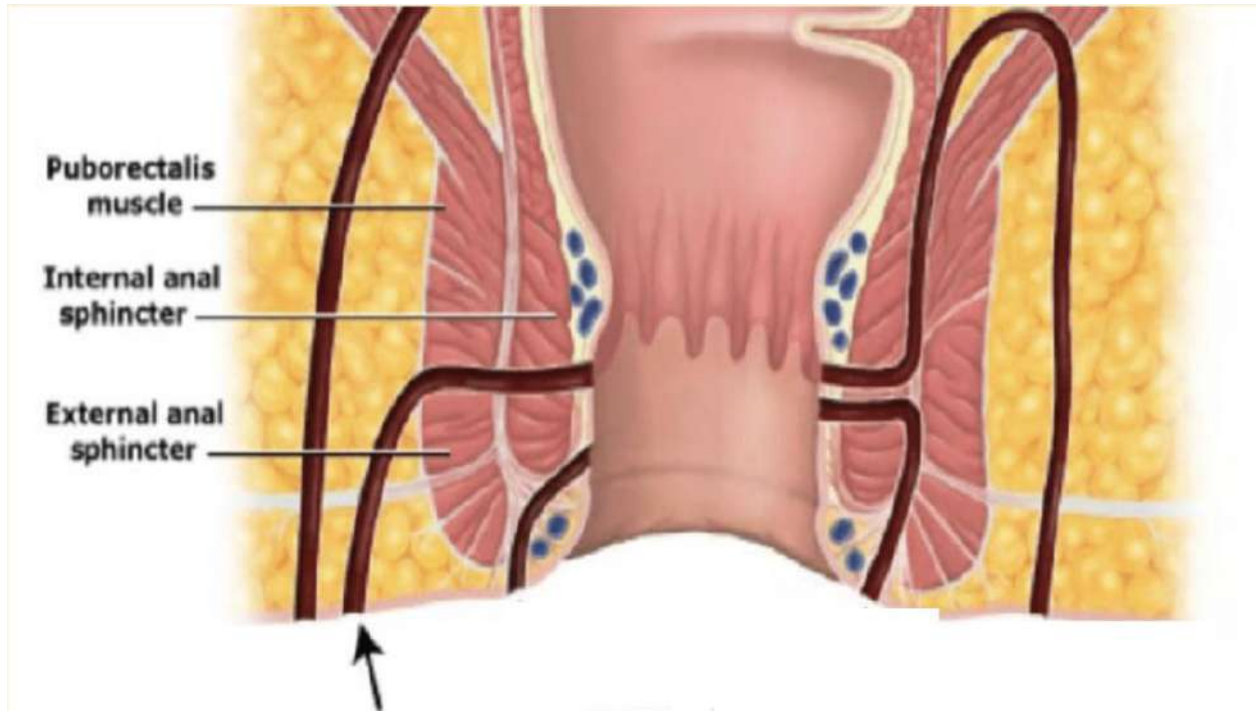
[Click Here to Explore More Surgery PYQs](#)

Correct answer: B) T4D

#### Question 4

##### Non-clinical question

The fistula marked in the image given below is of which type according to the Park classification?



Options:

- A) Transsphincteric
- B) Intersphincteric
- C) Suprasphincteric
- D) Extrasphincteric

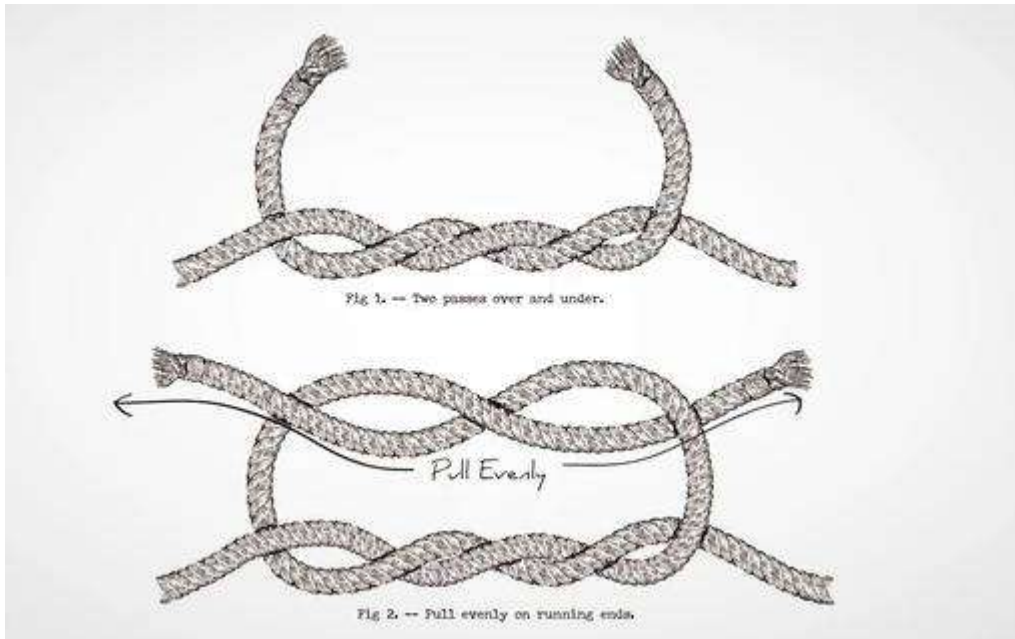
Correct answer: A) Transsphincteric

#### Question 5

##### Non-clinical question

Identify the type of knot shown in the image.

[Click Here to Explore More Surgery PYQs](#)



**Options:**

- A) Surgeon's knot
- B) Granny's knot
- C) Square knot
- D) Slip knot

**Correct answer: A) Surgeon's knot**

**Question 6**

**Non-clinical question**

Identify the type of suture material shown in the image



**Options:**

- A) Monofilament
- B) Polyfilament
- C) Organic
- D) Braided

**Correct answer: A) Monofilament**

**Question 7**

**Clinical question**

A 25-year-old patient had an RTA and was initially conscious but later became unconscious and subsequently died. On postmortem examination, multiple petechial haemorrhages were seen in the corpus callosum, but no significant findings were seen on CT brain. What is the most likely diagnosis?

[Click Here to Explore More Surgery PYQs](#)

**Options:**

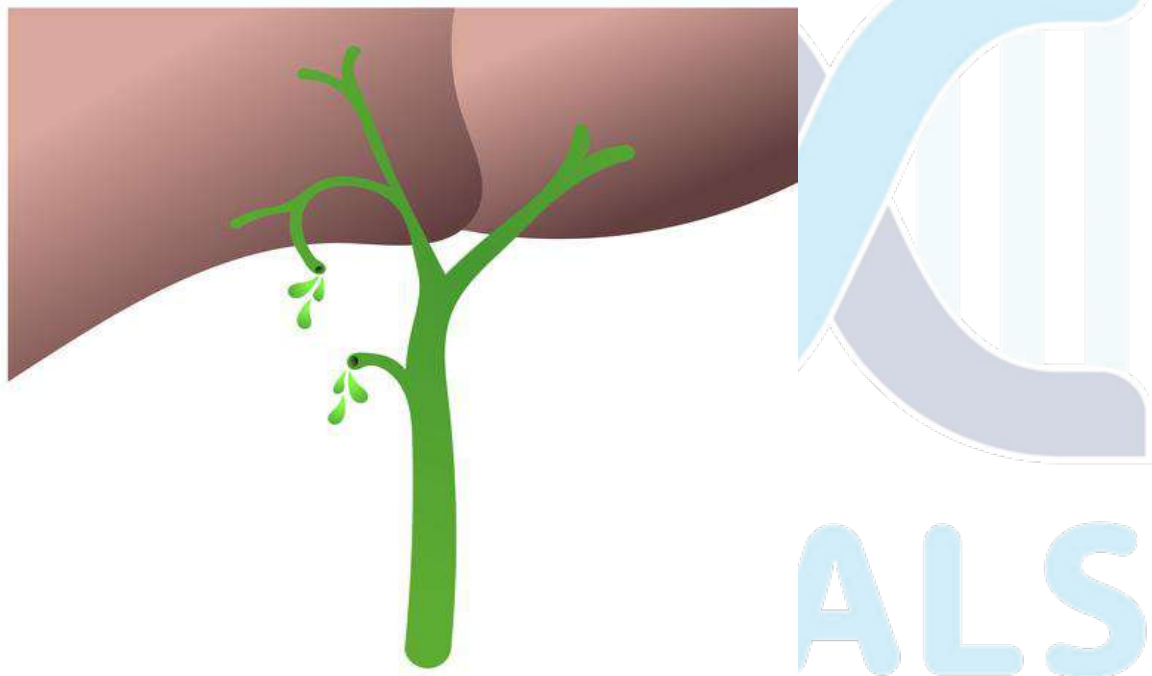
- A) Subarachnoid hemorrhage
- B) Diffuse axonal injury
- C) Subdural hematoma
- D) Extradural hematoma

**Options: B) Diffuse axonal injury**

### Question 8

**Non-clinical question**

Identify the type of bile duct injury shown in the image based on the Strasberg classification.



**Options:**

- A) Type A
- B) Type B
- C) Type C
- D) Type D

**Correct answer: A) Type A**

### Question 9

[Click Here to Explore More Surgery PYQs](#)

### Clinical question

A patient with jaundice, anorexia, and weight loss for 2 months. The gall bladder is palpable, soft and non-tender. What is the most likely diagnosis?

#### Options:

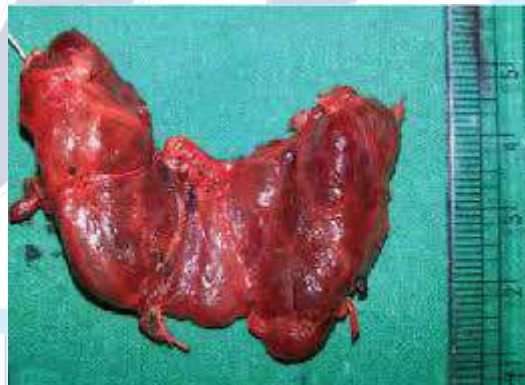
- A) Hepatocellular carcinoma
- B) Gall bladder cancer
- C) Pancreatic head cancer
- D) Choledocholithiasis

**Correct answer: C) Pancreatic head cancer**

### Question 10

#### Clinical question

A 40-year-old had the following structure resected. Which of the following complications can be seen 4 days later?



#### Options:

- A) Deviation of the angle of the mouth
- B) Carpopedal spasm
- C) Neck hematoma
- D) Migratory thrombophlebitis

**Correct answer: B) Carpopedal spasm**

### Question 11

#### Non-clinical question

What is true about the procedure shown in the image?

[Click Here to Explore More Surgery PYQs](#)



**Options:**

- A) Done in circumferential burns
- B) The image shows a skin graft
- C) Done for quick healing
- D) Incisions on the upper limb are done to avoid major vessels

**Correct answer: A) Done in circumferential lesions**

**Question 12**

**Clinical question**

A 7-year-old boy presents with progressive non-retractable foreskin and tense, white preputial skin. What is the diagnosis?



[Click Here to Explore More Surgery PYQs](#)

**Options:**

- A) Recurrent balanoposthitis
- B) Urethral meatus stenosis
- C) Paraphimosis
- D) Balanitis xerotica obliterans

**Correct answer: D) Balanitis xerotica obliterans**

**For more PYQs – Sign up on the DocTutorials App Now!**

**Website:** <https://www.doctutorials.com/plans>

**Play store:** <https://zcu.io/3jPK>

**App store:** <https://apple.co/2Zmm9jr>



**TUTORIALS**

[Click Here to Explore More Surgery PYQs](#)