



**NEET PG 2025**

**Pharmacology**

**Previous Year**

**Questions with**

**Solutions**

**TUTORIALS**

[Click Here to Explore More Pharmacology PYQs](#)

## Pharmacology

### Question: 1

#### Clinical question

A 38-year-old female presents with a pounding headache, palpitations, and sweating for 2 months. Each episode lasts for 20 minutes and is triggered by stress or physical exertion. Her pulse is 112/min, BP is 180/100 mm Hg, and urine shows elevated VMA and normetanephrines. MRI reveals a right adrenal mass. Which drug can be used both pre- and intra-operatively?

#### Options:

- A) Esmolol
- B) Phenoxybenzamine
- C) Nifedipine
- D) Clonidine

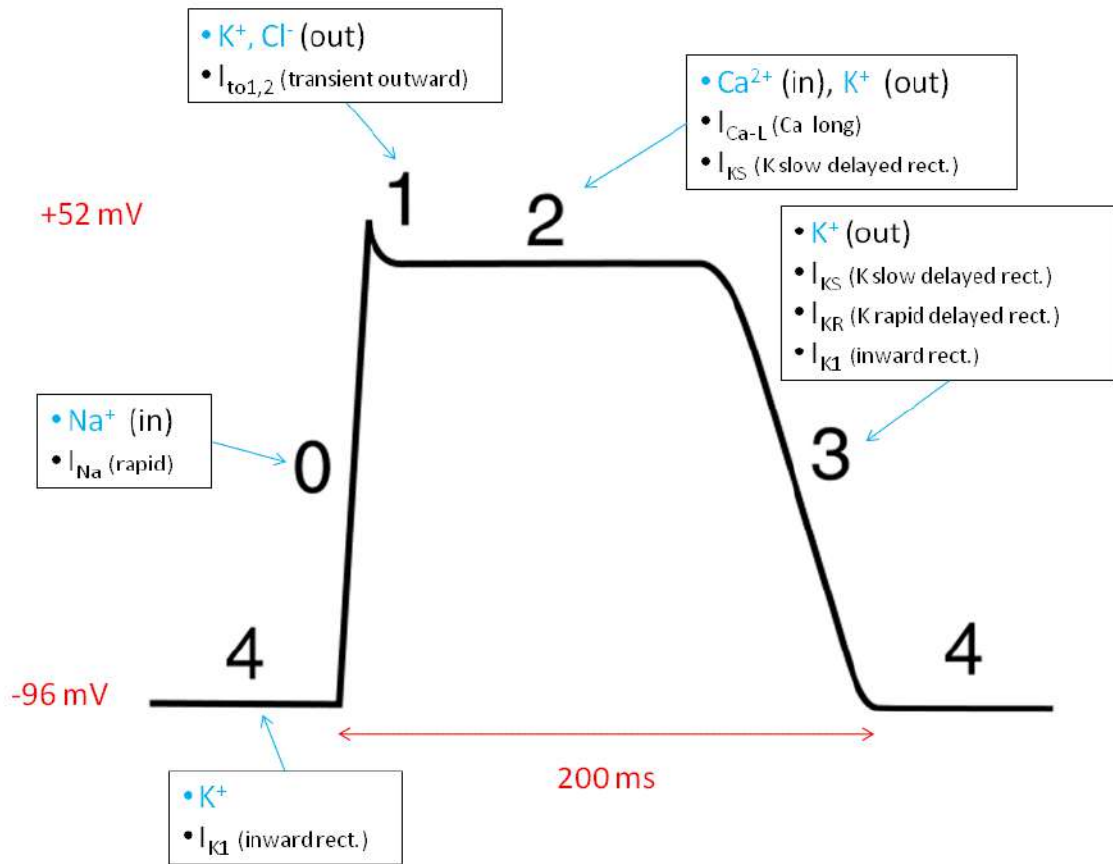
**Correct Answer: B) Phenoxybenzamine**

### Question 2

#### Non-clinical question

In the given cardiac action potential graph, identify the phase where amiodarone acts.

# TUTORIALS



Options:

- A) 0
- B) 1
- C) 2
- D) 3

Correct Answer: D) 3

Question: 3

Clinical question

A patient with tumour lysis syndrome has elevated uric acid levels. What is the mechanism of action of pegloticase?

Options:

- A) Oxidises uric acid
- B) Hydrolyses uric acid
- C) Inhibits xanthine oxidase
- D) Inhibits URAT-1 transporters in the kidney

**Correct Answer: A) Oxidises uric acid**

**Question: 4**

**Clinical question**

A female patient with HIV infection (CD4 count 150 cells/mm<sup>3</sup>) was newly diagnosed with rifampicin-resistant tuberculosis. What anti-tubercular treatment regimen should be initiated, and which HIV-related complication should you look out for?

**Options:**

- A) Isoniazid, levofloxacin, ethambutol, clarithromycin - QT prolongation
- B) Isoniazid, levofloxacin, ethambutol, pyrazonamide - hepatotoxicity
- C) Isoniazid, ethambutol, pyrazinamide - optic neuritis
- D) BPaLM regimen - IRIS

**Correct Answer: D) BPaLM regimen - IRIS**

**Question: 5**

**Clinical question**

Which of the following drugs is most appropriate to be started in a diabetic patient with an HbA1c of 8.8 mmol/L with heart failure who is already on metformin and insulin glargine?

**Options:**

- A) Pioglitazone
- B) Empagliflozin
- C) Glibenclamide
- D) Sitagliptin

**Correct Answer: B) Empagliflozin**

**Question 6**

**Clinical question**

A 32-year-old woman with a BMI of 38 kg/m<sup>2</sup> undergoes an elective lower segment cesarean section (LSCS) at 35 weeks due to preeclampsia. Which of the following is the most appropriate pharmacological method for DVT prophylaxis in this patient?

**Options:**

- A) Aspirin

[Click Here to Explore More Pharmacology PYQs](#)

- B) Clopidogrel
- C) Warfarin
- D) LMWH

**Correct Answer: D) LMWH**

### Question 7

#### Clinical question

What is the mechanism of renal calculi formation in a patient on Hydrochlorothiazide?

#### Options:

- A) Increased calcium excretion
- B) Decreased calcium excretion
- C) Increased oxalate absorption
- D) Decreased citrate excretion

**Correct Answer: D) Decreased citrate excretion**

### Question 8

#### Non-clinical question

In the Pritchard regimen for the management of eclampsia, what is the loading dose of magnesium sulfate?

#### Options:

- A) 10
- B) 14
- C) 4
- D) 20

**Correct Answer: B) 14**

### Question 9

#### Clinical question

A patient is diagnosed with paroxysmal supraventricular tachycardia and requires prophylaxis for the same. Which of the following drugs is appropriate for this patient?

[Click Here to Explore More Pharmacology PYQs](#)

**Options:**

- A) IV adenosine
- B) IV esmolol
- C) Oral phenytoin
- D) Oral verapamil

**Correct Answer: D) Verapamil**

**Question 10**

**Clinical question**

A female diagnosed with migraine presents to the OPD and complains of 4-5 episodes per month, with each episode lasting 24-48 hours. She also experiences anxiety and palpitations. She experiences partial pain relief with OTC NSAIDs and was started on sumatriptan prophylaxis, but developed chest tightness and flushing. She has no history of cardiac illnesses, but there is a positive family history of coronary artery disease. Which of the following drugs can be used for prophylaxis in this patient?

**Options:**

- A) Naratriptan
- B) Propranolol
- C) Topiramate
- D) Ergotamine

**Correct Answer: B) Propranolol**

# TUTORIALS

**Question 11**

**Clinical question**

A 60-year-old man with chronic kidney disease presents with complaints of increasing fatigue, dyspnea on exertion, and signs of congestive heart failure. On evaluation, he is found to have anaemia. Which of the following drugs is appropriate for this patient?

**Options:**

- A) Parenteral iron
- B) Folic acid
- C) Filgastrim
- D) Darbepoietin-alpha

**Correct Answer: D) Darbepoietin-alpha**

[Click Here to Explore More Pharmacology PYQs](#)

## Question 12

### Non-clinical question

Benralizumab, a monoclonal antibody used to treat asthma, acts against which of the following?

#### Options:

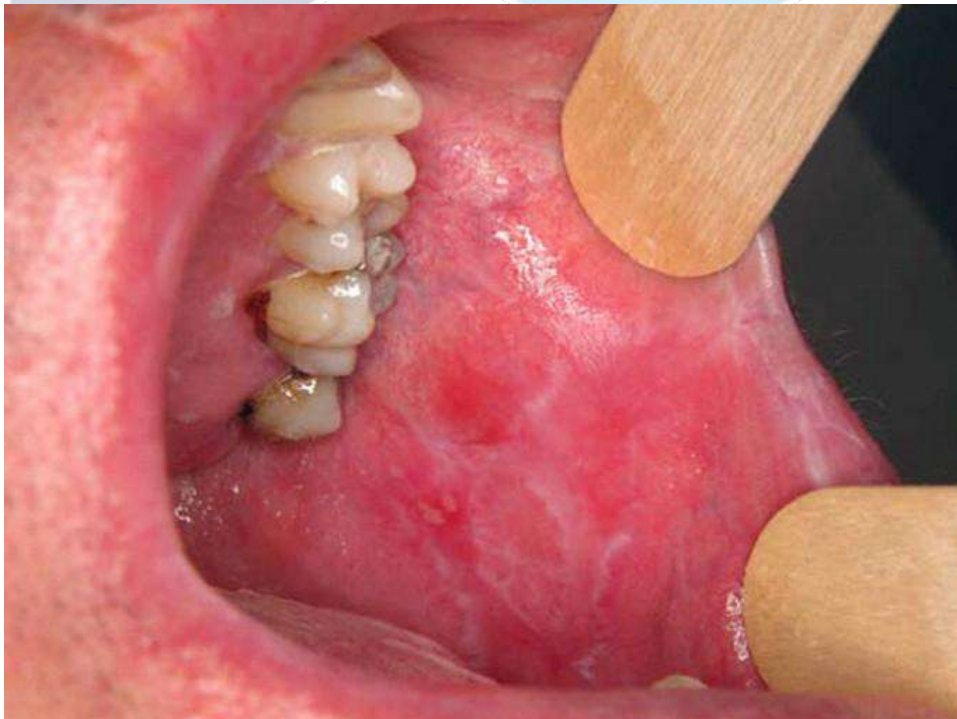
- A) IL-1
- B) IL-4
- C) IL-5
- D) TNF alpha

**Correct Answer: C) IL-5**

## Question 13

### Clinical question

A patient presents with complaints of patches in the oral mucosa, as shown below, with a burning sensation on taking spicy food for the past 6 months. Which of the following drugs can cause this side effect?



#### Options:

[Click Here to Explore More Pharmacology PYQs](#)

- A) Ciprofloxacin
- B) Fluconazole
- C) Beta blockers
- D) Lithium

**Correct Answer: C) Beta blockers**

#### Question 14

##### Clinical question

A patient presents with symptoms of GERD. Which of the following drugs increases the tone of the LES and increases gastric emptying?

##### Options:

- A) Sodium alginate
- B) Pantoprazole
- C) Metoclopramide
- D) Vonoprazan

**Correct Answer: C) Metoclopramide**

For more PYQs – Sign up on the DocTutorials App Now!

Website: <https://www.doctutorials.com/plans>

Play store: <https://zcu.io/3jPK>

App store: <https://apple.co/2Zmm9jr>

[Click Here to Explore More Pharmacology PYQs](#)