



NEET PG 2025

ENT Previous Year

Questions with

Solutions

TUTORIALS

[Click Here to Explore More ENT PYQs](#)

ENT – NEET PG 2025**Q.1****Clinical Question:**

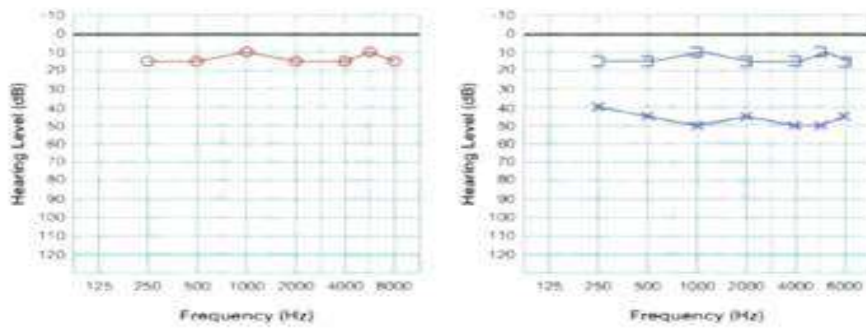
A 28-year-old male with a history of chronic ear discharge and hearing loss undergoes an otoscopic evaluation. The image below shows a large central perforation of the tympanic membrane with visible middle ear structures. What is the most appropriate surgical intervention for this patient?

**Options:**

- A) Atticotomy
- B) Modified radical mastoidectomy
- C) Myringoplasty
- D) Tympanoplasty

Correct Answer: D) Tympanoplasty**Q.2****Clinical Question:**

An industrial worker presents with hearing loss. On examination, Rinne's test was negative on the left side and positive on the right side. Weber's test lateralized to the left side. Pure Tone Audiometry (PTA) was done with the results as shown below. What is the most appropriate diagnosis?



Options:

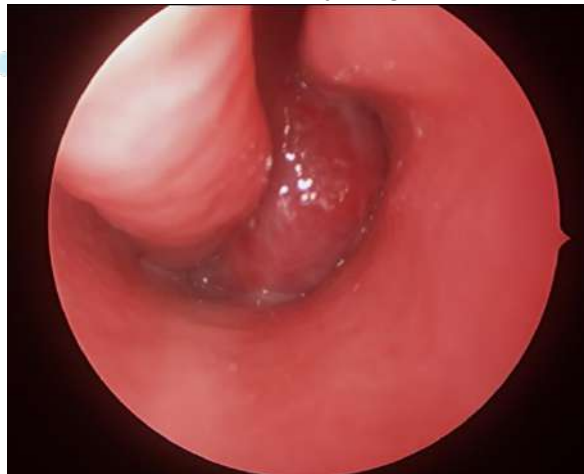
- A) Right conductive hearing loss
- B) Left conductive hearing loss
- C) Right sensorineural hearing loss
- D) Left sensorineural hearing loss

Correct Answer: B) Left conductive hearing loss

Q.3

Clinical Question:

A 12-year-old male presents with recurrent, profuse nasal bleeding and right-sided nasal obstruction. Endoscopy reveals a globular, vascular mass in the right nasal cavity occupying the posterior choanae and nasopharynx. A CT scan shows anterior bowing of the posterior wall of the maxillary sinus. What is the most likely diagnosis?



Options:

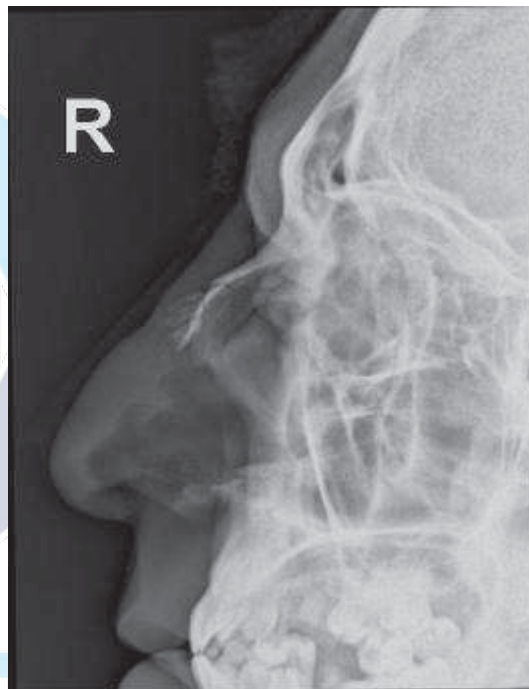
- A) Nasopharyngeal angiofibroma
- B) Antrochoanal polyp
- C) Rhinoscleroma
- D) Rhinosporidiosis

Correct Answer: A) Nasopharyngeal angiofibroma

[Click Here to Explore More ENT PYQs](#)

Q.4**Clinical Question:**

A patient presents to the emergency department with significant nasal trauma after a fall. Examination reveals a deviated nasal pyramid, and palpation confirms crepitus and mobility of the nasal bones. A lateral nasal bone X-ray confirms a displaced nasal bone fracture. Which of the following instruments is specifically designed for the closed reduction of a displaced nasal bone fracture?

**Options:**

- A) Tilley's forceps
- B) Luc's forceps
- C) Walsham forceps
- D) Bayonet forceps

Correct Answer: C) Walsham forceps

Q.5**Clinical Question:**

Following a building collapse, a male patient was brought to the emergency department with a copious amount of debris in the mouth, making endotracheal intubation impossible. The emergency procedure shown in the image was performed. Which of the following statements regarding this procedure is true?

[Click Here to Explore More ENT PYQs](#)



Options:

- A) It is used for effective ventilation for up to 6 hours
- B) It is used to measure central venous pressure
- C) It should be followed by a tracheostomy
- D) The work of breathing is more than with bag-and-mask ventilation

Correct Answer: C) It should be followed by a tracheostomy

Q.6

Clinical Question:

A 3-year-old child presents to the casualty in an unresponsive state after consuming peanuts. What is the most appropriate immediate management?

Options:

- A) Give abdominal thrusts
- B) Give 5 back slaps
- C) Start chest compressions
- D) Attempt endotracheal intubation

Correct Answer: C) Start chest compressions

Q.7

Clinical Question:

A 72-year-old female smoker presents with a long history of hoarseness of voice, difficulty swallowing, and difficulty breathing. The patient was diagnosed with laryngeal cancer and underwent surgical management. The post-operative picture is shown below. Which of the following surgeries was most likely performed on the patient?



Options:

- A) Partial laryngectomy
- B) Total laryngectomy
- C) Standard tracheostomy
- D) Percutaneous tracheostomy

Correct Answer: B) Total laryngectomy

For more PYQs – Sign up on the DocTutorials App Now!

Website: <https://www.doctutorials.com/plans>

Play store: <https://zcu.io/3jPK>

App store: <https://apple.co/2Zmm9jr>

TUTORIALS

[Click Here to Explore More ENT PYQs](#)